



Milton Steel



THE ONE STOP SHOP FOR YOUR INDUSTRIAL NEEDS ...
AN ISO 9001:2015 CERTIFIED COMPANY





Milton Steel

AN ISO 9001:2015 CERTIFIED COMPANY



THE ONE STOP SHOP FOR YOUR INDUSTRIAL NEEDS ...



As a pioneer and leader in the steel industry, Milton Steel was established in the year 1992 is at the forefront of technology and research. We are constantly innovating, listening to the rapidly changing market and giving the consumer the best value for his money.

Leveraging upon in-depth understanding of the global industry, we are capable in providing our customers with best possible solutions that meet with their industry specific requirements. We maintain a large stock of our products to provide a perennial supply of goods to our customers. All our materials are available with full traceability records by way of Mill certificates/Test certificates of test carried out by reputed and Govt. Approved laboratories. Our consistent adherence to international standard of quality has enabled us to cross many milestones of success surpassing others in today's fiercely competitive market scenario.





Milton Steel

AN ISO 9001:2015 CERTIFIED COMPANY



Certifications

ISO 9001 : 2015

GLOBA
GULF LLOYDS BUSINESS ASSURANCE

MANAGEMENT SYSTEM CERTIFICATE

This is to certify that Quality Management System of

MILTON STEEL
42/46 GURU RAJENDRA HOUSE, SHOP NO.3, 5TH KUMBHARWADA LANE, MUMBAI, MAHARASHTRA-400004, INDIA.

Has been assessed and found to conform to the requirements of

ISO 9001 : 2015

For Following Scope:

STOCKIST, SUPPLIER, IMPORTER & EXPORTER OF INDUSTRIAL RAW MATERIAL, PIPES, TUBES, BARS, SHEETS, PLATES, PROFILES, WIRES, NUT BOLT, FASTENERS, FLANGES, FORGED FITTINGS, BUTTWELD FITTINGS, INSTRUMENTATION.

Certificate No.: 1011-QMS-BA-07-3202-SIAC-001888-IN

This certificate is valid from 05-Sep-2023 until 05-Sep-2026 and remain valid subject to satisfactory surveillance audits on 04-Sep-2024 and 04-Sep-2025. Re-certification audit due on 05-Sep-2026. Certification expiry on 04-Sep-2026.

[Signature]
Certification Manager
Gulf Lloyds Business Assurance

GIBA is a div. of Gulf Lloyds (UK) Limited, an CAB for System certification. GIBA is accredited by SAI (C) (Swiss International Accreditation Center - EUROPE). For verification of this certificate, with CB: WWW.GI.BA.COM. The certificate remains the property of Gulf Lloyds Business Assurance, to whom it must be returned on request. Lack of fulfillment of certification terms and conditions at all times, may render this certificate invalid. Gulf Lloyds or its any division does not accept any liabilities or claims raised due to this certificate.

ISO 14001 : 2015

GLOBA
GULF LLOYDS BUSINESS ASSURANCE

MANAGEMENT SYSTEM CERTIFICATE

This is to certify that Environmental Management System of

MILTON STEEL
42/46 GURU RAJENDRA HOUSE, SHOP NO.3, 5TH KUMBHARWADA LANE, MUMBAI, MAHARASHTRA-400004, INDIA.

Has been assessed and found to conform to the requirements of

ISO 14001 : 2015

For Following Scope:

STOCKIST, SUPPLIER, IMPORTER & EXPORTER OF INDUSTRIAL RAW MATERIAL, PIPES, TUBES, BARS, SHEETS, PLATES, PROFILES, WIRES, NUT BOLT, FASTENERS, FLANGES, FORGED FITTINGS, BUTTWELD FITTINGS, INSTRUMENTATION.

Certificate No.: 1011-EMS-BA-07-3202-SIAC-001889-IN

This certificate is valid from 05-Sep-2023 until 05-Sep-2026 and remain valid subject to satisfactory surveillance audits on 04-Sep-2024 and 04-Sep-2025. Re-certification audit due on 05-Sep-2026. Certification expiry on 04-Sep-2026.

[Signature]
Certification Manager
Gulf Lloyds Business Assurance

GIBA is a div. of Gulf Lloyds (UK) Limited, an CAB for System certification. GIBA is accredited by SAI (C) (Swiss International Accreditation Center - EUROPE). For verification of this certificate, with CB: WWW.GI.BA.COM. The certificate remains the property of Gulf Lloyds Business Assurance, to whom it must be returned on request. Lack of fulfillment of certification terms and conditions at all times, may render this certificate invalid. Gulf Lloyds or its any division does not accept any liabilities or claims raised due to this certificate.

ISO 45001 : 2018

GLOBA
GULF LLOYDS BUSINESS ASSURANCE

MANAGEMENT SYSTEM CERTIFICATE

This is to certify that Occupational Health and Safety Management System of

MILTON STEEL
42/46 GURU RAJENDRA HOUSE, SHOP NO.3, 5TH KUMBHARWADA LANE, MUMBAI, MAHARASHTRA-400004, INDIA.

Has been assessed and found to conform to the requirements of

ISO 45001 : 2018

For Following Scope:

STOCKIST, SUPPLIER, IMPORTER & EXPORTER OF INDUSTRIAL RAW MATERIAL, PIPES, TUBES, BARS, SHEETS, PLATES, PROFILES, WIRES, NUT BOLT, FASTENERS, FLANGES, FORGED FITTINGS, BUTTWELD FITTINGS, INSTRUMENTATION.

Certificate No.: 1011-OHSMS-BA-07-3202-SIAC-001890-IN

This certificate is valid from 05-Sep-2023 until 05-Sep-2026 and remain valid subject to satisfactory surveillance audits on 04-Sep-2024 and 04-Sep-2025. Re-certification audit due on 05-Sep-2026. Certification expiry on 04-Sep-2026.

[Signature]
Certification Manager
Gulf Lloyds Business Assurance

GIBA is a div. of Gulf Lloyds (UK) Limited, an CAB for System certification. GIBA is accredited by SAI (C) (Swiss International Accreditation Center - EUROPE). For verification of this certificate, with CB: WWW.GI.BA.COM. The certificate remains the property of Gulf Lloyds Business Assurance, to whom it must be returned on request. Lack of fulfillment of certification terms and conditions at all times, may render this certificate invalid. Gulf Lloyds or its any division does not accept any liabilities or claims raised due to this certificate.

भारत सरकार
Government of India
सूक्ष्म, लघु एवं मध्यम उद्यम मंत्रालय
Ministry of Micro, Small and Medium Enterprises

MSME
सूक्ष्म, लघु एवं मध्यम उद्यम
MINI SMALL MEDIUM ENTERPRISES

UDYAM REGISTRATION CERTIFICATE

UDYAM REGISTRATION NUMBER: UDYAM-MH-19-0239034

NAME OF ENTERPRISE: MILTON STEEL

S.No.	Classification Year	Enterprise Type	Classification Date
1	2023-24	Small	15/09/2023

MAJOR ACTIVITY: **TRADING**
(For availing benefits of Priority Sector Lending(PSL) ONLY)

SOCIAL CATEGORY OF ENTREPRENEUR: GENERAL

S.No.	Name of Unit(s)
1	WAREHOUSE

Flat/Door/Block No.	SHOP NO.3	Name of Premises/ Building	42/46, GURU RAJENDRA HOUSE
Village/Town	MUMBAI	Block	2ND PATHAN STREET,
Road/Street Lane	5TH KUMBHARWADA LANE	City	MUMBAI
State	MAHARASHTRA	District	MUMBAI, Pin-400004
Mobile	9619891096	Email:	MILTONSTEEL111@GMAIL.COM

DATE OF INCORPORATION / REGISTRATION OF ENTERPRISE: 01/07/2017

DATE OF COMMENCEMENT OF PRODUCTION/BUSINESS: 01/07/2017

S.No.	NIC 2 Digit	NIC 4 Digit	NIC 5 Digit	Activity
1	46 - Wholesale trade, except of motor vehicles and motorcycles	4662 - Wholesale of metals and metal ores	46620 - Wholesale of metals and metal ores	Trading

DATE OF UDYAM REGISTRATION: 15/09/2023

* In case of graduation (upward/reverse) of status of an enterprise, the benefit of the Government Schemes will be availed as per the provisions of Notification No. S.O. 219(E) dated 26.06.2020 issued by the Mo/MSME.
Disclaimer: This is computer generated statement, no signature required. Printed from <https://udyamregistration.gov.in> & Date of printing: 15/09/2023

For any assistance, you may contact:

1. District Industries Centre: MUMBAI CITY (MAHARASHTRA)
2. MSME-DFO: MUMBAI (MAHARASHTRA)

Visit: www.msme.gov.in; www.dcmsme.gov.in; www.champ.gov.in

Follow us @minmsme & @msmechampion





Milton Steel

AN ISO 9001:2015 CERTIFIED COMPANY



• Pipes & Tubes

Size: 1/2" to 30"

Schedule: Sch.5 TO Sch. XXS

Wall Thickness: 1mm to 100mm



• Stainless Steel

Specification: ASTM A312, A249, A269, A358, A731, A268

Grade: 304, 304L, 304H, 316, 316L, 316H, 316Ti, 316Ln, 309S, 309H, 310S, 310H, 317, 317L, 317H, 321, 321H, 347, 347H, 904L, 254 SMO, 253MA, 202, 303, 302HQ, 301, 405, 409, 409L, 410, 420, 430, 430Ti, 439, 440, 444, 446, 15-5 PH, 17-4 PH, 330.

• Duplex steel

Specification: ASTM A789, A790

Grade: UNS S31803, UNS S32205(2205/F55), UNS S32750(2507/F53), UNS S32760(Zeron100), UNS S32304, UNS S32900(329), UNS S24565(F49), UNS S32550(Ferralium), UNS S31803(F51/329LN)

• Nickel Alloy

Grade: N02200(Nickel 200), N02201(Nickel 201), N04400(Monel 400), N05500(Monel K500), N06022(Hastelloy C22), N06030(Hastelloy G30), N06059(Alloy59), N06455(Hastelloy C4), N10665(Hastelloy B2), Hastelloy G, N06985(HastelloyG3), N06075(Nimonic 75), N07080(Nimonic 80A), N07090(Nimonic 90), Alloy 602 CA, N13021(Nimonic 105), N06690 (Alloy 690), N08020(Capenter 20 Cb 3), N06617(Inconel 617), N06002(Hastelloy X), N07718(Inconel 718), N07750(Inconel X-750), N06600(Inconel 600), N10276(Hastelloy C276), N06601(Inconel 601), N06625(Inconel 625), N08825(Inconel 825), Inconel 925, C70600(Cupronickel90/10), C71500(Cupronickel70/30).

• Titanium

Specification: ASTM B861, B862, B338,

Grade: Gr.1 R 56250(CP4), Gr.2 R 50400(CP3), Gr.3 R 50550(CP2), Gr.4 R 50700(CP1), Gr.7 52400, Gr.11 R 52250, Gr.5 R 56400(6Al-4V), Gr.23 R 56401(6AL-4V-ELI), Gr.12 R 53400



• Copper & Brass

• Aluminium





MiltonSteel

AN ISO 9001:2015 CERTIFIED COMPANY



• Round, Square & Hex Bars

Size: 5mm to 500mm

Length: 500mm to 6000mm and in cut to size



• Stainless Steel

Grade: 304, 304L, 304H, 316, 316L, 316H, 316Ti, 316Ln, 309S, 309H, 310S, 310H, 317, 317L, 317H, 321, 321H, 347, 347H, 904L, 254 SMO, 253MA, 202, 303, 302HQ, 301, 405, 409, 409L, 410, 420, 430, 430Ti, 439, 440, 444, 446, 15-5 PH, 17-4 PH, 330.

• Duplex steel

Grade: UNS S31803, UNS S32205(2205/F55), UNS S32750(2507/F53), UNS S32760(Zeron100), UNS S32304, UNS S32900(329), UNS S24565(F49), UNS S32550(Ferralium), UNS S31803(F51/329LN)



• Nickel Alloy

Grade: N02200(Nickel 200), N02201(Nickel 201), N04400(Monel 400), N05500(Monel K500), N06022(Hastelloy C22), N06030(Hastelloy G30), N06059(Alloy59), N06455(Hastelloy C4), N10665(Hastelloy B2), Hastelloy G, N06985(HastelloyG3), N06075(Nimonic 75), N07080(Nimonic 80A), N07090(Nimonic 90), Alloy 602 CA, N13021(Nimonic 105), N06690 (Alloy 690), N08020(Capenter 20 Cb 3), N06617(Inconel 617), N06002(Hastelloy X), N07718(Inconel 718), N07750(Inconel X-750), N06600(Inconel 600), N10276(Hastelloy C276), N06601(Inconel 601), N06625(Inconel 625), N08825(Inconel 825), Inconel 925, C70600(Cupronickel90/10), C71500(Cupronickel70/30).

• Titanium

Grade: Gr.1 R 56250(CP4), Gr.2 R 50400(CP3), Gr.3 R 50550(CP2), Gr.4 R 50700(CP1), Gr.7 52400, Gr.11 R 52250, Gr.5 R 56400(6Al-4V), Gr.23 R 56401(6AL-4V-ELI), Gr.12 R 53400

• Copper & Brass

• Aluminium





Milton Steel

AN ISO 9001:2015 CERTIFIED COMPANY



• Sheets, Plates & Coils

Length 500mm to 6000mm

Width: 500mm to 2000mm

Thickness: 0.5mm to 100mm

• Stainless Steel

Grade: 304, 304L, 304H, 316, 316L, 316H, 316Ti, 316Ln, 309S, 309H, 310S, 310H, 317, 317L, 317H, 321, 321H, 347, 347H, 904L, 254 SMO, 253MA, 202, 303, 302HQ, 301, 405, 409, 409L, 410, 420, 430, 430Ti, 439, 440, 444, 446, 15-5 PH, 17-4 PH, 330.

• Duplex steel

Grade: UNS S31803, UNS S32205(2205/F55), UNS S32750(2507/F53), UNS S32760(Zeron100), UNS S32304, UNS S32900(329), UNS S24565(F49), UNS S32550(Ferrarium), UNS S31803(F51/329LN)

• Nickel Alloy

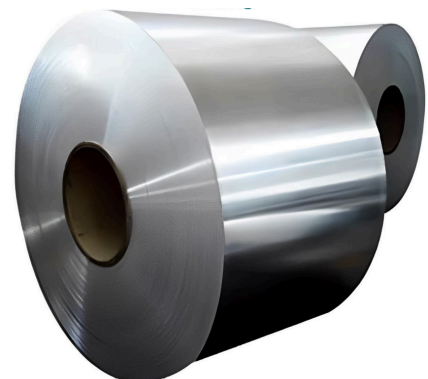
Grade: N02200(Nickel 200), N02201(Nickel 201), N04400(Monel 400), N05500(Monel K500), N06022(Hastelloy C22), N06030(Hastelloy G30), N06059(Alloy59), N06455(Hastelloy C4), N10665(Hastelloy B2), Hastelloy G, N06985(HastelloyG3), N06075(Nimonic 75), N07080(Nimonic 80A), N07090(Nimonic 90), Alloy 602 CA, N13021(Nimonic 105), N06690 (Alloy 690), N08020(Capenter 20 Cb 3), N06617(Inconel 617), N06002(Hastelloy X), N07718(Inconel 718), N07750(Inconel X-750), N06600(Inconel 600), N10276(Hastelloy C276), N06601(Inconel 601), N06625(Inconel 625), N08825(Inconel 825), Inconel 925, C70600(Cupronickel90/10), C71500(Cupronickel70/30).

• Titanium

Grade: Gr.1 R 56250(CP4), Gr.2 R 50400(CP3), Gr.3 R 50550(CP2), Gr.4 R 50700(CP1), Gr.7 52400, Gr.11 R 52250, Gr.5 R 56400(6Al-4V), Gr.23 R 56401(6AL-4V-ELI), Gr.12 R 53400

• Copper & Brass

• Aluminium





Milton Steel

AN ISO 9001:2015 CERTIFIED COMPANY



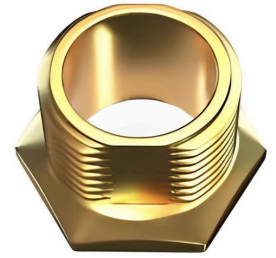
• Fitting

Size: 1/2" to 30"

Schedule: Sch.5 TO Sch. XXS

Wall Thickness: 1mm to 100mm

Type: Seamless & Welded



• Stainless Steel

Grade: 304, 304L, 304H, 316, 316L, 316H, 316Ti, 316Ln, 309S, 309H, 310S, 310H, 317, 317L, 317H, 321, 321H, 347, 347H, 904L, 254 SMO, 253MA, 202, 303, 302HQ, 301, 405, 409, 409L, 410, 420, 430, 430Ti, 439, 440, 444, 446, 15-5 PH, 17-4 PH, 330.

• Duplex steel

Grade: UNS S31803, UNS S32205(2205/F55), UNS S32750(2507/F53), UNS S32760(Zeron100), UNS S32304, UNS S32900(329), UNS S24565(F49), UNS S32550(Ferralium), UNS S31803(F51/329LN)

• Nickel Alloy

Grade: N02200(Nickel 200), N02201(Nickel 201), N04400(Monel 400), N05500(Monel K500), N06022(Hastelloy C22), N06030(Hastelloy G30), N06059(Alloy59), N06455(Hastelloy C4) N10665(Hastelloy B2), Hastelloy G, N06985(HastelloyG3), N06075(Nimonic 75), N07080(Nimonic 80A), N07090(Nimonic 90), Alloy 602 CA, N13021(Nimonic 105), N06690 (Alloy 690), N08020(Capenter 20 Cb 3), N06617(Inconel 617), N06002(Hastelloy X), N07718(Inconel 718), N07750(Inconel X-750), N06600(Inconel 600), N10276(Hastelloy C276), N06601(Inconel 601), N06625(Inconel 625), N08825(Inconel 825), Inconel 925, C70600(Cupronickel90/10), C71500(Cupronickel70/30).

• Titanium

Grade: Gr.1 R 56250(CP4), Gr.2 R 50400(CP3), Gr.3 R 50550(CP2), Gr.4 R 50700(CP1), Gr.7 52400, Gr.11 R 52250, Gr.5 R 56400(6Al-4V), Gr.23 R 56401(6AL-4V-ELI), Gr.12 R 53400

• Copper & Brass

• Aluminium





Milton Steel

AN ISO 9001:2015 CERTIFIED COMPANY



• Flanges

Size: 1/2" NB TO 72" NB

Class: 150#, 300#, 600#, 900#, 1500# & 2500#.



Standard:-

ANSI Flanges: 150#, 300#, 600#, 900#, 1500# & 2500#.

AWWA: Class 2B, 2D, 4E, 5E, 6E

DIN: PN6, PN10, PN16, PN25, PN40

JIS: 5K, 10K

Bs: Table D, E, F.

TYPES

- PLATE BLANK FLANGE
- CREWED FLANGE
- LAP JOINT FLANGE
- SOCKETWELD FLANGE
- LARGE RINGS
- WELDNECK FLANGE
- BLIND FLANGE
- ORIFACE FLANGE
- RTJ FLANGE
- DECK FLANGES
- LONG WELD NECK FLANGE
- THREADED FLANGE
- SILIPON
- SPECTACLE
- REDUCING FLANGESTYPE
- PLATE BLANK FLANGE
- SCREWED FLANGE
- LAP JOINT FLANGE
- SOCKETWELD FLANGE
- LARGE RINGS
- WELDNECK FLANGE
- BLIND FLANGE
- ORIFACE FLANGE
- RTJ FLANGE
- DECK FLANGES
- LONG WELD NECK FLANGE
- THREADED FLANGE
- SILIPON
- SPECTACLE
- REDUCING FLANGES

• **Duplex & Super Duplex:** UNS S31803, UNS S32750, UNS S32760,

• **Hastelloy Alloy:** ASTM B564 Hastelloy B2, C276, C22

• **Incoloy Alloys:** ASTM B564 Alloy 20, Alloy A286, Alloy 800H/800HT, Alloy 825,

• **Inconel Alloys:** ASTM B564 Alloy 600, Alloy 601, Alloy625, Alloy 718, Alloy 725,

• **Monel Alloys:** ASTM B564 Monel 400, Monel K500.

• **Stainless Steel:** ASTM A182, F304, 304L, 304H, 316, 316L, 317, 317L, 321, 310, 347, 904L





Milton Steel

AN ISO 9001:2015 CERTIFIED COMPANY



• Fasteners



• Stainless Steel

Grade: 304, 304L, 304H, 316, 316L, 316H, 316Ti, 316Ln, 309S, 309H, 310S, 310H, 317, 317L, 317H, 321, 321H, 347, 347H, 904L, 254 SMO, 253MA, 202, 303, 302HQ, 301, 405, 409, 409L, 410, 420, 430, 430Ti, 439, 440, 444, 446, 15-5 PH, 17-4 PH, 330.

• Duplex steel

Grade: UNS S31803, UNS S32205(2205/F55), UNS S32750(2507/F53), UNS S32760(Zeron100), UNS S32304, UNS S32900(329), UNS S24565(F49), UNS S32550(Ferralium), UNS S31803(F51/329LN)

• Nickel Alloy

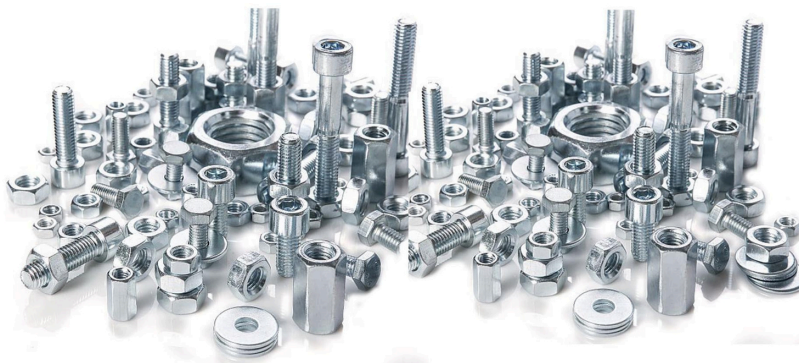
Grade: N02200(Nickel 200), N02201(Nickel 201), N04400(Monel 400), N05500(Monel K500), N06022(Hastelloy C22), N06030(Hastelloy G30), N06059(Alloy 59), N06455(Hastelloy C4), N10665(Hastelloy B2), Hastelloy G, N06985(Hastelloy G3), N06075(Nimonic 75), N07080(Nimonic 80A), N07090(Nimonic 90), Alloy 602 CA, N13021(Nimonic 105), N06690 (Alloy 690), N08020(Capenter 20 Cb 3), N06617(Inconel 617), N06002(Hastelloy X), N07718(Inconel 718), N07750(Inconel X-750), N06600(Inconel 600), N10276(Hastelloy C276), N06601(Inconel 601), N06625(Inconel 625), N08825(Inconel 825), Inconel 925, C70600(Cupronickel 90/10), C71500(Cupronickel 70/30).

• Titanium

Grade: Gr.1 R 56250(CP4), Gr.2 R 50400(CP3), Gr.3 R 50550(CP2), Gr.4 R 50700(CP1), Gr.7 52400, Gr.11 R 52250, Gr.5 R 56400(6Al-4V), Gr.23 R 56401(6AL-4V-ELI), Gr.12 R 53400

• Copper & Brass

• Aluminium





Milton Steel

AN ISO 9001:2015 CERTIFIED COMPANY



• Wires

• Stainless Steel

Grade: 304, 304L, 304H, 316, 316L, 316H, 316Ti, 316Ln, 309S, 309H, 310S, 310H, 317, 317L, 317H, 321, 321H, 347, 347H, 904L, 254 SMO, 253MA, 202, 303, 302HQ, 301, 405, 409, 409L, 410, 420, 430, 430Ti, 439, 440, 444, 446, 15-5 PH, 17-4 PH, 330.

• Duplex steel

Grade: UNS S31803, UNS S32205(2205/F55), UNS S32750(2507/F53), UNS S32760(Zeron100), UNS S32304, UNS S32900(329), UNS S24565(F49), UNS S32550(Ferralium), UNS S31803(F51/329LN)

• Nickel Alloy

Grade: N02200(Nickel 200), N02201(Nickel 201), N04400(Monel 400), N05500(Monel K500), N06022(Hastelloy C22), N06030(Hastelloy G30), N06059(Alloy59), N06455(Hastelloy C4), N10665(Hastelloy B2), Hastelloy G, N06985(HastelloyG3), N06075(Nimonic 75), N07080(Nimonic 80A), N07090(Nimonic 90), Alloy 602 CA, N13021(Nimonic 105), N06690 (Alloy 690), N08020(Capenter 20 Cb 3), N06617(Inconel 617), N06002(Hastelloy X), N07718(Inconel 718), N07750(Inconel X-750), N06600(Inconel 600), N10276(Hastelloy C276), N06601(Inconel 601), N06625(Inconel 625), N08825(Inconel 825), Inconel 925, C70600(Cupronickel90/10), C71500(Cupronickel70/30).

• Titanium

Grade: Gr.1 R 56250(CP4), Gr.2 R 50400(CP3), Gr.3 R 50550(CP2), Gr.4 R 50700(CP1), Gr.7 52400, Gr.11 R 52250, Gr.5 R 56400(6Al-4V), Gr.23 R 56401(6AL-4V-ELI), Gr.12 R 53400

• Copper & Brass

• Aluminium





Milton Steel

AN ISO 9001:2015 CERTIFIED COMPANY



• Valves

• Stainless Steel

Grade: 304, 304L, 304H, 316, 316L, 316H, 316Ti, 316Ln, 309S, 309H, 310S, 310H, 317, 317L, 317H, 321, 321H, 347, 347H, 904L, 254 SMO, 253MA, 202, 303, 302HQ, 301, 405, 409, 409L, 410, 420, 430, 430Ti, 439, 440, 444, 446, 15-5 PH, 17-4 PH, 330.

• Duplex steel

Grade: UNS S31803, UNS S32205(2205/F55), UNS S32750(2507/F53), UNS S32760(Zeron100), UNS S32304, UNS S32900(329), UNS S24565(F49), UNS S32550(Ferralium), UNS S31803(F51/329LN)

• Nickel Alloy

Grade: N02200(Nickel 200), N02201(Nickel 201), N04400(Monel 400), N05500(Monel K500), N06022(Hastelloy C22), N06030(Hastelloy G30), N06059(Alloy59), N06455(Hastelloy C4) N10665(Hastelloy B2), Hastelloy G, N06985(HastelloyG3), N06075(Nimonic 75), N07080(Nimonic 80A), N07090(Nimonic 90), Alloy 602 CA, N13021(Nimonic 105), N06690 (Alloy 690), N08020(Capenter 20 Cb 3), N06617(Inconel 617), N06002(Hastelloy X), N07718(Inconel 718), N07750(Inconel X-750), N06600(Inconel 600), N10276(Hastelloy C276), N06601(Inconel 601), N06625(Inconel 625), N08825(Inconel 825), Inconel 925, C70600(Cupronickel90/10), C71500(Cupronickel70/30).

• Titanium

Grade: Gr.1 R 56250(CP4), Gr.2 R 50400(CP3), Gr.3 R 50550(CP2), Gr.4 R 50700(CP1), Gr.7 52400, Gr.11 R 52250, Gr.5 R 56400(6Al-4V), Gr.23 R 56401(6AL-4V-ELI), Gr.12 R 53400

• Copper & Brass

• Aluminium





MiltonSteel

AN ISO 9001:2015 CERTIFIED COMPANY



42/46 GURU RAJENDRA HOUSE, SHOP NO.03, 5TH KUMBHARWADA LANE,
MUMBAI, MAHARASHTRA, INDIA 400004.



VIPUL SHAH / VISHAL SHAH / YASH SHAH / VANSH SHAH



+91 9769262735 / +91 9619890106 / +91 9892087465 / +91 2266363465



+91 9769262735 / +91 9619890106 / +91 9892087465 / +91 8928618455



miltonsteel111@gmail.com / sales@miltonsteel.in / contact@miltonsteel.in



www.miltonsteel.in





Milton Steel



THE ONE STOP SHOP FOR YOUR INDUSTRIAL NEEDS ...
AN ISO 9001:2015 CERTIFIED COMPANY

